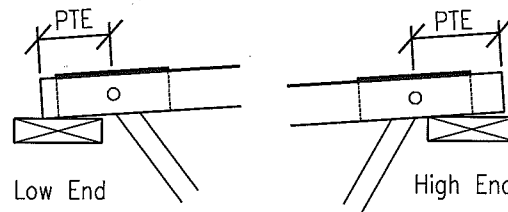
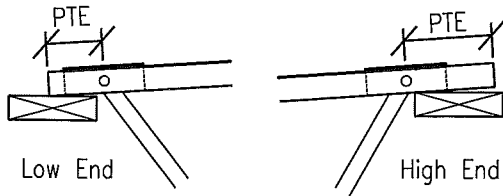


# Bevel Plate Requirements

Top Chord Bearing at Low End

Note: Min. Slope on most Roofs is 0.25"/Ft.



2x4 & 2x6 Chords  
Brg. Pin 1/2" Off Support  
ESR & LA City

3x4 Chord  
Brg. Pin 3/4" Off Support

PTE (Inches)	Max. Slope (In./Ft.)	Max. Reaction (Lbs.)	
		2100f	2400f & 2850f
2.50	0.5625	2,500	2,700
2.75	0.5000	2,600	2,700
3.00	0.4500	2,700	2,700
3.25	0.4091	2,700	2,800
3.50	0.3750	2,700	2,900
3.75	0.3462	2,700	2,900
4.00	0.3214	2,700	2,900
4.25	0.3000	2,700	2,900
4.50	0.2813	2,700	2,900
4.75	0.2647	2,700	2,900
5.00	0.2500	2,700	2,900
5.25	0.2368	2,700	2,900
5.50	0.2250	2,700	2,900
5.75	0.2143	2,700	2,900
6.00	0.2045	2,700	2,900
6.25	0.1957	2,700	2,900
6.50	0.1875	2,700	2,900
6.75	0.1800	2,700	2,900
7.00	0.1731	2,700	2,900
7.25	0.1667	2,700	2,900
7.50	0.1607	2,700	2,900
7.75	0.1552	2,700	2,900
8.00	0.1500	2,700	2,900

PTE (Inches)	Max. Slope (In./Ft.)	Max. Reaction (Lbs.)	
		ESR	LA City
3.50	0.4091	3,180	2,600
3.75	0.3750	3,325	2,800
4.00	0.3462	3,470	3,000
4.25	0.3214	3,615	3,200
4.50	0.3000	3,837	3,350
4.75	0.2813	4,058	3,500
5.00	0.2647	4,280	3,650
5.25	0.2500	4,280	3,650
5.50	0.2368	4,280	3,650
5.75	0.2250	4,280	3,650
6.00	0.2143	4,280	3,650
6.25	0.2045	4,280	3,650
6.50	0.1957	4,280	3,650
6.75	0.1875	4,280	3,650
7.00	0.1800	4,280	3,650
7.25	0.1731	4,280	3,650
7.50	0.1667	4,280	3,650
7.75	0.1607	4,280	3,650
8.00	0.1552	4,280	3,650

If top chord slope is less than or equal to Max. Slope shown for condition, Bevel plate not required.

If top chord slope is greater than Max. Slope shown for condition, Bevel plate is required.

# Bevel Plate Requirements

Top Chord Bearing at High End

If top chord slope is less than or equal to 0.3750"/Ft., Bevel plate not required.

If top chord slope is greater than 0.3750"/Ft., Bevel plate is required.

Web Joist NW Corp.  
118 Borovec Road  
Chehalis, WA 98532

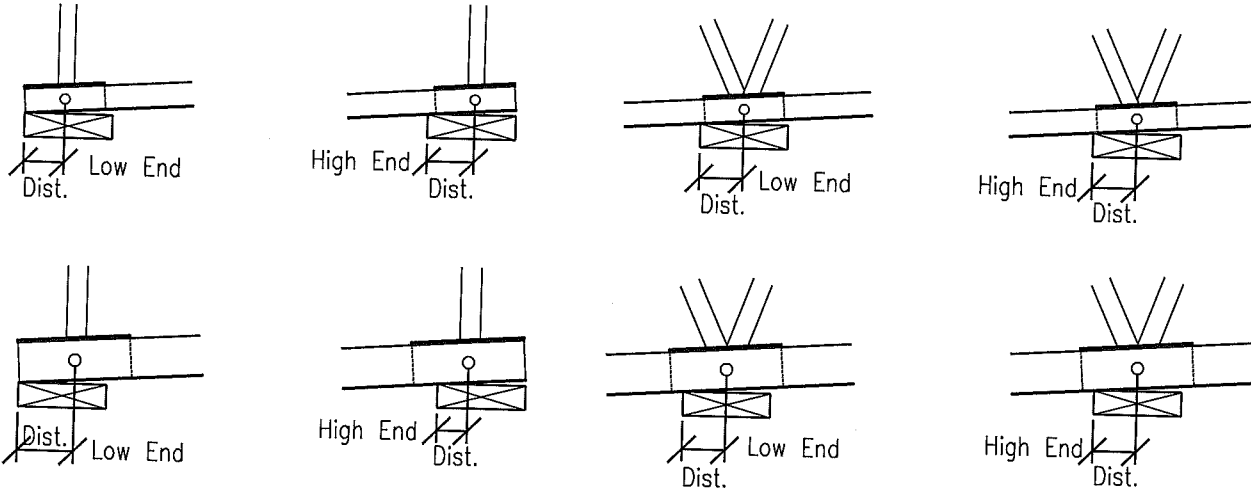
ICC-ES ESR-2504  
LA City RR 25825

# Bevel Plate Requirements

Bottom Chord Bearing at Low or High End

Note: Min. Slope on most Roofs is 0.25"/Ft.

Dist. Is the Horiz. dimension from Point of Contact to Centerline of bearing pin.  
Point of Contact is where bottom of bottom chord touches corner of support.



Dist. (Inches)	Max. Slope (In./Ft.)
0.875	0.6429
1.000	0.5625
1.125	0.5000
1.250	0.4500
1.375	0.4091
1.500	0.3750
1.625	0.3462
1.750	0.3214
1.875	0.3000
2.000	0.2813
2.125	0.2647
2.250	0.2500
2.375	0.2368
2.500	0.2250
2.625	0.2143
2.750	0.2045
2.875	0.1957

Dist. (Inches)	Max. Slope (In./Ft.)
3.000	0.1875
3.125	0.1800
3.250	0.1731
3.375	0.1667
3.500	0.1607
3.625	0.1552
3.750	0.1500
3.875	0.1452
4.000	0.1406
4.125	0.1364
4.250	0.1324
4.375	0.1286
4.500	0.1250
4.625	0.1216
4.750	0.1184
4.875	0.1154
5.000	0.1125

If bottom chord slope is less than or equal to Max. Slope shown for condition, Bevel plate not required.  
If bottom chord slope is greater than Max. Slope shown for condition, Bevel plate is required.

Note: If centerline of bearing pin is at face of support or off support, use top chord plate requirements.

Web Joist NW Corp.  
118 Borovec Road  
Chehalis, WA 98532

ICC-ES ESR-2504  
LA City RR 25825

Min. Pin to End at Bearing Pins

	2x4 & 2x6 Chord Brg. Clip is 5" Long	3x4 Chord Brg. Clip is 7" Long
Top Brg.		
Btm. Brg.		

Bottom Bearing Vert. Web Conditions

	2x4 & 2x6 Chord	3x4 Chord
2x4 Plate		
2x6 Plate		
2x8 Plate		

Web Joist NW Corp.  
118 Borovec Road  
Chehalis, WA 98532

ICC-ES ESR-2504  
LA City RR 25825

**Allowable Reactions in Lbs.**  
**Expanded Table 6**

Per Table 6

2x4 & 2x6 Sel. Str. Through 2100f

WJSS, WJ21 & WJ21W

ESR & LA City		a Dist. (In.)							
b Dist. (In.)	2.500	2.625	2.750	2.875	3.000	3.125	3.250	3.375	3.500
0.500	2,500	2,550	2,600	2,650	2,700	2,700	2,700	2,700	2,700
0.625	2,300	2,325	2,350	2,375	2,400	2,463	2,525	2,588	2,650
0.750	2,100	2,100	2,100	2,100	2,100	2,225	2,350	2,475	2,600
0.875	1,950	1,950	1,950	1,950	1,950	2,025	2,100	2,175	2,250
1.000	1,800	1,800	1,800	1,800	1,800	1,825	1,850	1,875	1,900
1.125	1,700	1,713	1,725	1,738	1,750	1,763	1,775	1,788	1,800
1.250	1,600	1,625	1,650	1,675	1,700	1,700	1,700	1,700	1,700

2x4 & 2x6 2400f Through 2850f

WJ24, WJ24W, WJ28 & WJ28W

ESR & LA City		a Dist. (In.)							
b Dist. (In.)	2.500	2.625	2.750	2.875	3.000	3.125	3.250	3.375	3.500
0.500	2,700	2,700	2,700	2,700	2,700	2,750	2,800	2,850	2,900
0.625	2,450	2,488	2,525	2,563	2,600	2,675	2,750	2,825	2,900
0.750	2,200	2,275	2,350	2,425	2,500	2,600	2,700	2,800	2,900
0.875	2,100	2,138	2,175	2,213	2,250	2,300	2,350	2,400	2,450
1.000	2,000	2,000	2,000	2,000	2,000	2,000	2,000	2,000	2,000
1.125	1,950	1,950	1,950	1,950	1,950	1,950	1,950	1,950	1,950
1.250	1,900	1,900	1,900	1,900	1,900	1,900	1,900	1,900	1,900

3x4 Lam-Chord

WJ-L6

ESR Only		a Dist. (In.)							
b Dist. (In.)	3.5000	3.6250	3.7500	4.0000	4.2500	4.3750	4.5000	4.7500	5.0000
0.750	3,180	3,253	3,325	3,470	3,615	3,726	3,837	4,058	4,280
0.875	3,125	3,173	3,222	3,318	3,415	3,520	3,625	3,835	4,045
1.000	3,070	3,094	3,118	3,167	3,215	3,314	3,413	3,612	3,810
1.125	2,870	2,914	2,958	3,045	3,133	3,196	3,259	3,386	3,513
1.250	2,670	2,733	2,797	2,923	3,050	3,078	3,105	3,160	3,215
1.375	2,560	2,609	2,658	2,755	2,853	2,887	2,921	2,989	3,058
1.500	2,450	2,484	2,518	2,587	2,655	2,696	2,737	2,818	2,900

3x4 Lam-Chord

WJ-L6

LA City Only		a Dist. (In.)							
b Dist. (In.)	3.5000	3.6250	3.7500	4.0000	4.2500	4.3750	4.5000	4.7500	5.0000
0.750	2,600	2,700	2,800	3,000	3,200	3,275	3,350	3,500	3,650
0.875	2,580	2,658	2,737	2,893	3,050	3,124	3,198	3,347	3,495
1.000	2,560	2,617	2,673	2,787	2,900	2,973	3,047	3,193	3,340
1.125	2,525	2,584	2,643	2,762	2,880	2,894	2,908	2,937	2,965
1.250	2,490	2,552	2,613	2,737	2,860	2,815	2,770	2,680	2,590
1.375	2,440	2,460	2,480	2,520	2,560	2,565	2,570	2,580	2,590
1.500	2,390	2,368	2,347	2,303	2,260	2,315	2,370	2,480	2,590

Web Joist NW Corp.  
118 Borovec Road  
Chehalis, WA 98532

ICC-ES ESR-2504  
LA City RR 25825